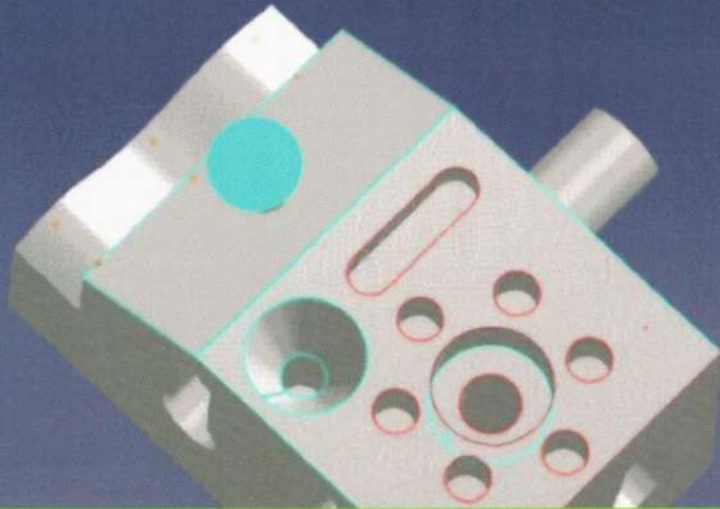
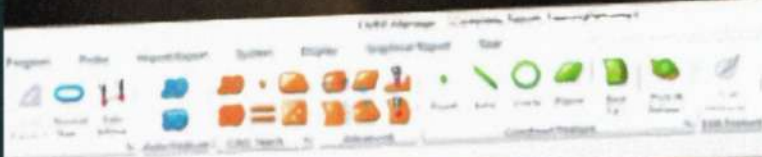


# QXSOFT



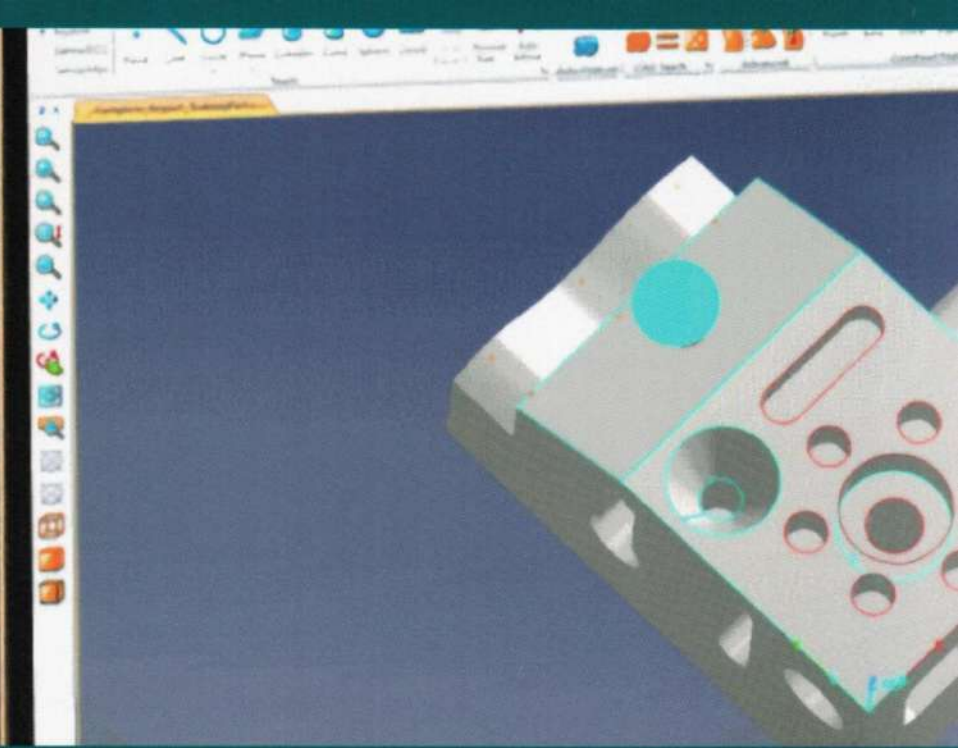
Software for any CMM

# CMM-Manager



CMM-Manager is a task-oriented, highly intuitive, plug-n-play, 3D metrology software package. Available for vision, manual, portable, and CNC coordinate measuring machines. Avoid costly hardware retrofits and connect directly to your existing equipment.

<https://qxcmm.com>



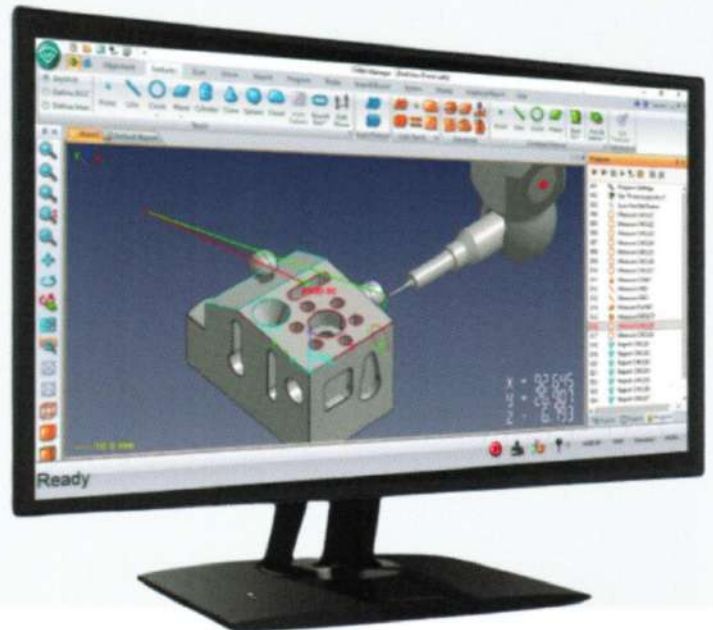
## QxSOFT

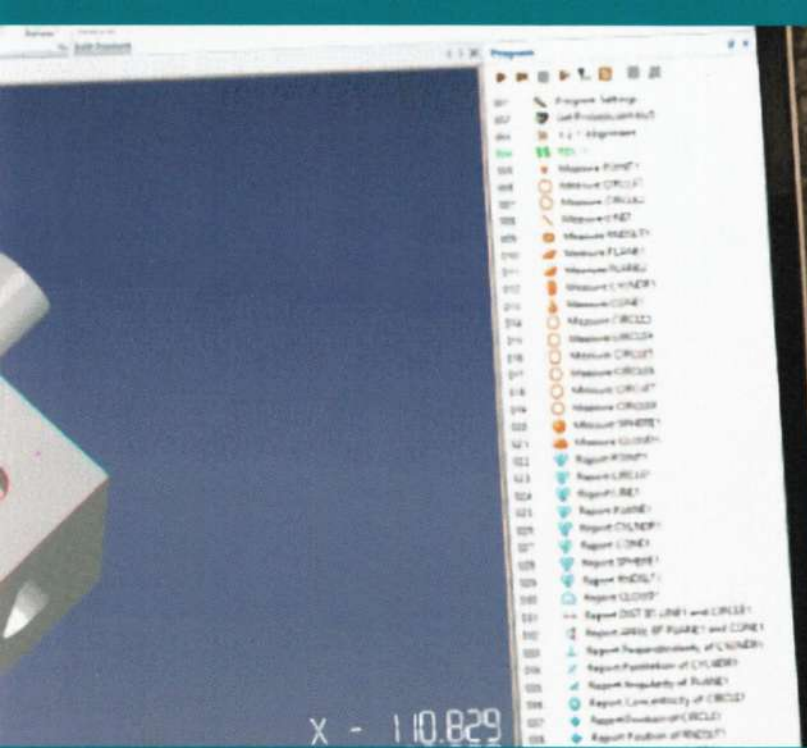
"QuickSoft" was formed in 2020. Our small team accounts for more than 100 years experience in the Metrology Industry. Each team member brings unique experience, with a mix of Computer Science, Mechanical, Applications & Sales. As an independent company we provide the highest level of service, due to focus on our product.

First released at the Chicago Quality Show in 2001, CMM-Manager was originally developed and marketed by Integrated Quality Inc. Later purchased by Metris Inc. in 2008, then in 2009, Metris Inc. was purchased by Nikon Corp. Well known for its wide plug-n-play compatibility with over 50 devices, ease of use, automatic Probe Path Planning, and superior Help Desk Support.

## CMM-Manager

Numerous software configurations to suit your needs. Our no-hardware retrofit works with more than 50 different devices. Upgrade today and operate all of your inspection systems with one low cost and easy to use software package.





## Supported Probes

Renishaw PH9 / PH10 / PH50

Renishaw PH20

Renishaw RTP20

Renishaw TP2, TP20, TP200

Renishaw SP25

Renishaw PHI, PH6, MH8, etc.

TESAStar - M8 & TKJ

zCat

Zeiss ST & RDS



## Features & Options

CAD Import - IGES, STEP, DXF

Native CAD Import

Gear Inspection

Rotary Table / 4th axis

Renishaw SP25 Scanning

Automatic Tip Calibration

PH20 Path Planning

GD&T / Basic Reporting

Graphical Reporting

Automatic Probe Path Creation



|                               | iNexiv   | DCC      | Manual   | Standard | Lite     |
|-------------------------------|----------|----------|----------|----------|----------|
| CAD Import - IGES, STEP, DXF  | X        | optional | optional | X        | n/a      |
| Native CAD Import             | optional | optional | optional | optional | n/a      |
| Gear Inspection               | optional | optional | n/a      | optional | optional |
| Rotary Table / 4th axis       | X        | optional | optional | optional | optional |
| Renishaw SP25 Scanning        | n/a      | optional | optional | optional | optional |
| Automatic Tip Calibration     | X        | X        | n/a      | X        | X        |
| PH20 Path Planning            | n/a      | X        | n/a      | X        | n/a      |
| GD&T / Basic Reporting        | X        | X        | X        | X        | X        |
| Graphical Reporting           | X        | X        | X        | X        | X        |
| Automatic Probe Path Creation | X        | X        | n/a      | X        | X        |



Object oriented interface allows easy program creation without complex text based programming language. CMM-Manager also offers flexible yet easy-to-use functionalities, including graphical probe configuration management, automatic tip calibration, cross section scanning and group feature measurement. Simplify your metrology tasks through our intuitive yet powerful software available for any CMM, portable arm, or measuring microscope. The fully integrated environment features:

- Walk-up / quick-measure
- One-click CAD-measure
- Virtual simulation
- Real-time verification
- Automatic path planning
- ISO & ASME GD&T
- CAD alignment
- Iterative datum alignment
- Native CAD Import
- Vision measurement tools

## Plug-n-Play Systems

### Traditional CMMs

- Helmel
- Sheffield
- Brown & Sharpe
- Hexagon / DEA
- Mituyoyo
- Wenzel / Pantec
- Zeiss
- LK / Nikon
- Aberlink / Deva
- Renishaw / I++

### Portable CMMs

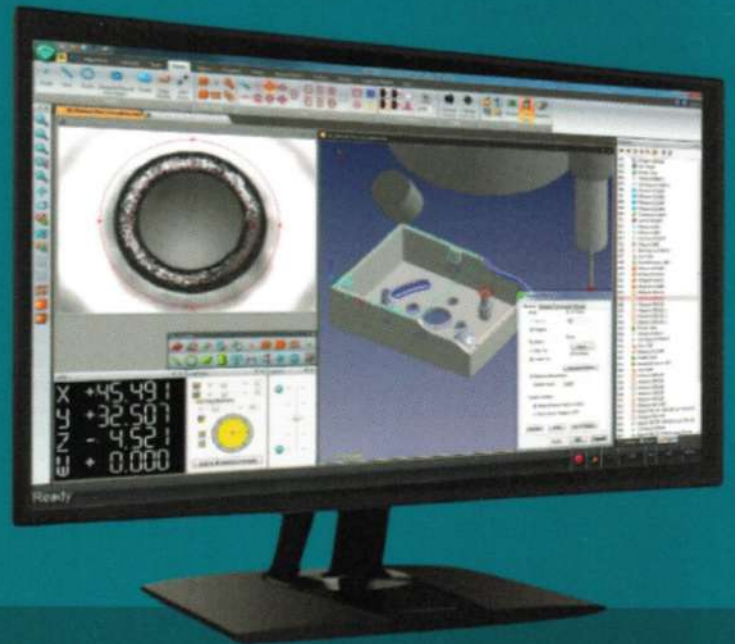
- FARO Arm
- Romer Arm
- Nikon MCAx
- RPS Smart Arm
- Kreon Arm
- Tomelleri Arm
- 7D Metrology – iGPS
- zCat Portable CMM
- Metris - K-CMM / MCA

info@qxcmm.com  
(740) 777 9609



#cmmmanager #nocode

## Nikon Vision Systems



### Nexiv / CNC

- VMA / iNexiv
- VMZ-R / Nexiv

### Manual

- MM-400 / 800
- V-12 Comparator

## Add-on Options

- Native CAD Import
- Gear Inspection
- Rotary Table
- SP25 Scanning
- Vision Probe



## QXSOFT

631 Bear Run Lane  
Lewis Center, Ohio 43035  
<https://qxcmm.com>